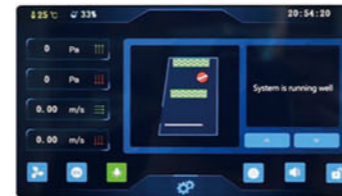




## EC Series Class II A2 Biological Safety Cabinet



**Color Touch Screen**  
Touch operation, real-time and clearer display of various values and appointment timing function.

## ADVANTAGE

- 7-inch touch color display screen: touch operation, real-time more clear and dynamic display of various values of the safety cabinet, and has the function of appointment timing.
- Power-on password can be set to prevent unrelated personnel from mis-operation.
- Automatically adjust the wind speed.
- With power-off memory function, the state before power-off is restored after power-on, and there is a visual prompt alarm.
- The integrated design of the operation area makes it easy to disassemble and clean.
- The working area is equipped with a wind speed sensor to detect the wind speed in real and real time.
- It can be used manually or electrically, and the front window can be closed by pulling down the glass door when the power is off.
- The cabinet is separated from the base. The height of the adjustable base can be customized.
- Interlocking function: UV lamp and front window; UV lamp and fan, LED lamp; fan and front window.
- It has the function of appointment timing, which can automatically set the time of starting and shutting down the safety cabinet and the running time of ultraviolet lamps, fans and sockets.
- The front window closes the double trigger signal, so that the sterilization and disinfection function of the ultraviolet lamp is normally turned on.
- The negative pressure air duct is equipped with a foreign matter filtering structure to prevent foreign matter such as paper scraps from entering the fan system and affecting the normal operation of the product.
- The front window glass has a one-key lift function.

## TECHNICAL PARAMETERS

Model	EA2-2F
External Size (W*D*H)	700*700*2000mm
Internal Size (W*D*H)	600*500*540mm
Tested Opening	Safety height 200mm
Max Opening	360mm
Inflow Velocity	0.53±0.025m/s
Downflow Velocity	0.33±0.025m/s
ULPA Filter	Two, 99.9995% efficiency at 0.12µm, filter life indicator
Front Window	Manual and electric. Tempered glass≥5mm. Anti UV
Noise	≤65 dB
UV Lamp	15W*1 UV timer, UV life indicator, emission of 253.7 nanometers for most efficient decontamination
LED Lamp	8W*2
Illumination	≥1000Lux
Consumption	≤500W
Waterproof Socket	Two, total load of two sockets: 500W
Display	LCD display: exhaust filter and downflow filter pressure, filter and UV lamp working time, inflow and downflow velocity, filter life, humidity and temperature, system working time etc.
Control System	70% air recirculation, 30% air exhaust
Visual and Audio Alarm	Filter replacement, window over height, abnormal air flow velocity, high filter pressure, abnormal power failure
Material	Work Zone: 304 stainless steel Main Body: Cold-rolled steel with anti-bacteria powder coating
Work Surface Height	750mm with base stand
Power Supply	AC220V 50/60Hz; 110V 60Hz
Standard Accessory	Cabinet*1, Base stand*1, LED lamp*2, UV lamp*2, Drain ball valve*1, Waterproof Socket*2, EC Fan, Foot switch, Remote control
Optional Accessory	Water and gas tap, Electric height adjustable base stand, Armrest
Package Size (W*D*H)	Carton: 820*910*1500mm
Gross Weight	170kg



**Remote Control**  
All functions can be realized with it, making the operation much easier and more convenient.



**Foot Switch**  
Adjust front window height by foot during experiment, to avoid airflow turbulence caused by arm movement.



**Wind Speed Sensor & EC Fan**



**Footmaster Caster**  
Universal caster with brake and leveling feet.



**Stepper Motor and Handle**  
The front window can be controlled manually or electrically



**Cabinet Support Block**  
Easy to lift, prevent hand pressing



**Iron hook support rod for panel support**



**UV Lamp**  
Emission of 253.7 nanometers for most efficient decontamination.